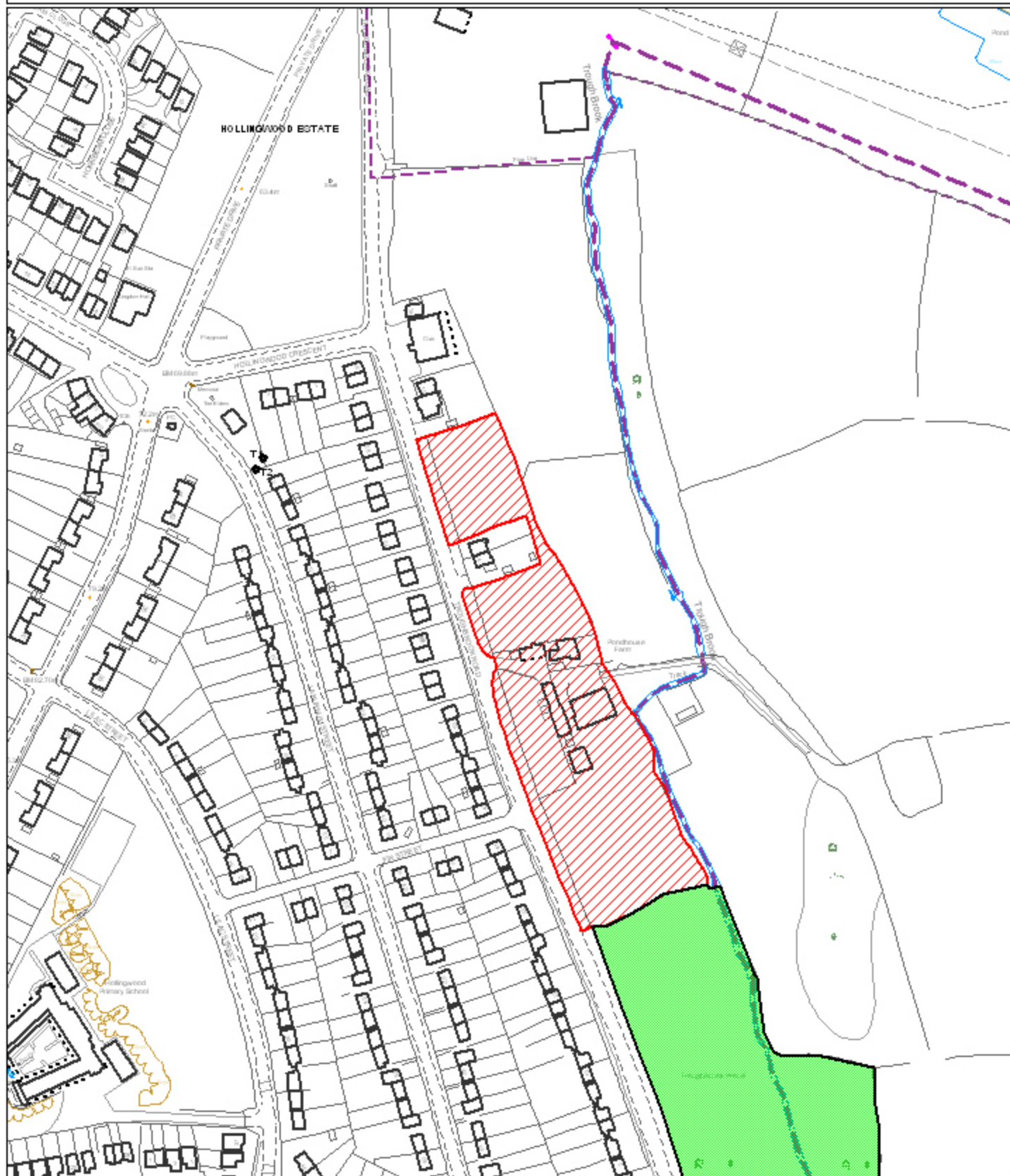


32.LAND OFF TROUGH BROOK ROAD. HOLLINGWOOD



Reproduced from the Ordnance Survey mapping with the permission of the Controller of Her Majesty's Stationery Office;(c)Crown Copyright. Unauthorised reproduction infringes Crown Copyright and may lead to prosecution or civil proceedings. Chesterfield Borough Council Licence No. 100018505 (2006)

Scale 1:2500 Date Plotted 13/11/2007

Plot centred at 441665 374274

ref:p/tp/shlaa/sw/trh